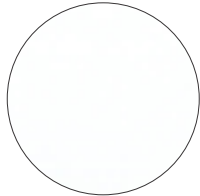


FashionFlex® PUFF

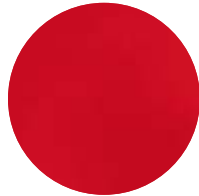
Available in 19.5" width only



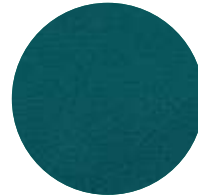
White
FFPU-PUFF 01



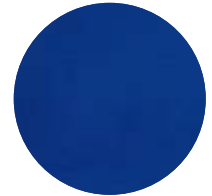
Black
FFPU-PUFF 02



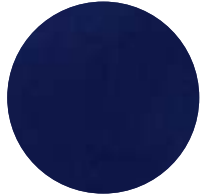
Red
FFPU-PUFF 03



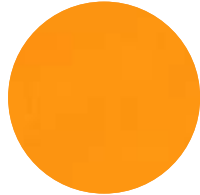
Green
FFPU-PUFF 04



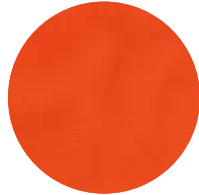
Royal Blue
FFPU-PUFF 05



Navy Blue
FFPU-PUFF 06



Yellow
FFPU-PUFF 07



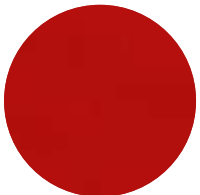
Orange
FFPU-PUFF 08



Grey
FFPU-PUFF 09



Dark Grey
FFPU-PUFF 10



Burgundy
FFPU-PUFF 11



Purple
FFPU-PUFF 12



Camel
FFPU-PUFF 13



Khaki
FFPU-PUFF 14



NEW
Gold
FFPU-PUFF 16



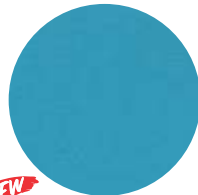
NEW
Silver
FFPU-PUFF 17



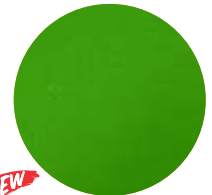
NEW
Lilac
FFPU-PUFF 18



Pink
FFPU-PUFF 20



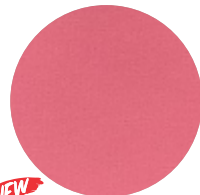
NEW
Light Blue
FFPU-PUFF 22



NEW
Emerald Green
FFPU-PUFF 23



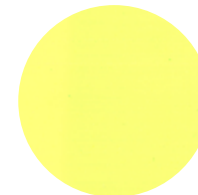
NEW
Coffee
FFPU-PUFF 24



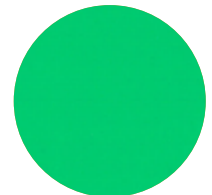
NEW
Dark Pink
FFPU-PUFF 25



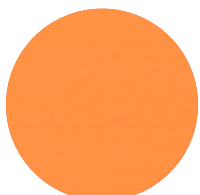
NEW
Vivid Orange
FFPU-PUFF 26



Neon Yellow
FFPU-PUFF 30



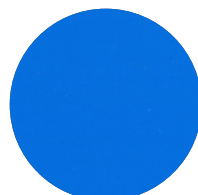
Neon Green
FFPU-PUFF 32



Neon Orange
FFPU-PUFF 34



Neon Pink
FFPU-PUFF 36



Neon Blue
FFPU-PUFF 38

See reverse side for application instructions.

Copyright © 2022, Specialty Materials & Digital Decoration, LLC. All rights reserved.

Fashion Flex[®] PUFF

- Puffs up when pressed- no need for re-pressing to get the puff effect
- Easy to weed with simple application instructions
- We offer the most Puff colors in the industry
- Pressure-sensitive carrier enables easy weeding and repositioning

Acceptable Fabrics

Cotton, Uncoated Polyester, Fabric Blends, Polyester/Acrylic, and Similar Fabrics.

Excluding Nylon

Sizing Available

Available Widths (in.): 19.5" only

Available Lengths (ft.): 15', 30', 45', 60', and 81' rolls

Thickness

4.9-6.7 mils/125-170 microns

Special Precautions

Cannot be layered. Remove carrier immediately after pressing. If the carrier or transfer sheet is left on, it can create inconsistencies in the puffed material.

PLEASE NOTE: These instructions have changed, depending on color. Be sure to use the settings provided on your roll. Test before doing large runs.



45° Blade
Recommended



Cut this material
in mirror image



White & Silver: 290°F
Lilac, Pink, & Neons: 275°F
All Others: 305°F



Medium, even pressure



8-15 seconds
*start at 8, if more time is needed,
press for an additional 4 seconds
(time/temp varies per color, use the
settings that came on your roll)



Peel Hot- remove carrier and/or
transfer sheet immediately



Wash inside-out, cold
water, gentle cycle,
tumble dry low.

Tech Support: 877.437.8556 | SpecialtyMaterials.com

Test on dazzle cloth and other moisture-wicking polyesters. Moisture-wicking materials have better adhesion when washed and dried using no fabric softener or blotted with rubbing alcohol before pressing. Be advised that dye-migration has occurred with low energy dyes in polyester and poly-blend fabrics with heat transfer vinyl that does not contain dye-blocking agents. Specialty Materials & Digital Decoration, LLC. All rights reserved. 877.437.8556